

TROUBLESHOOTING:

PROBLEM	SOLUTION
Phone or tablet not charging	<ul style="list-style-type: none"> Unplug and reattach charging cable Lantern needs to be charged Lantern needs new alkaline batteries
Lantern is cycling through dimming range when power button is pressed	<ul style="list-style-type: none"> Disable “Try Me” mode
Lantern flickers	<ul style="list-style-type: none"> Unplug charged phone Lantern needs to be recharged
Light output decreases	<ul style="list-style-type: none"> Charge lantern
No light output or lantern shuts off	<ul style="list-style-type: none"> Recharge lantern Replace alkaline batteries

SPECS:

Operating temp: 0C-45°C (charging); -20°C-60°C (discharge)

Storage temp: -20°C (<1 hour); -20°C-25°C

USB out: 5V@1A DC

USB in: 5V@1A DC

Charge time: About 5 hours

Battery capacity: 16.08 WH/4,400mAh

Lumens: 650

FCC STATEMENT

This device complies with Part 15 of the FCC Rules and Industry Canada license-exempt RSS standard(s). Operation is subject to the following two conditions: (1) this device may not cause harmful interference, and (2) this device must accept any interference received, including interference that may cause undesired operation.

FCC NOTE: The manufacturer is not responsible for any radio or TV interference caused by unauthorized modifications to this equipment. Such modifications could void the user's authority to operate the equipment.

NOTE: This equipment has been tested and found to comply with the limits for a Class B digital device, pursuant to Part 15 of the FCC Rules. These limits are designed to provide reasonable protection against harmful interference in a residential installation. This equipment generates, uses and can radiate radio frequency energy, and if not installed and used in accordance with the instructions, may cause harmful interference to radio communications. However, there is no guarantee that interference will not occur in a particular installation. If this equipment does cause harmful interference to radio or television reception, which can be determined by turning the equipment off and on, the user is encouraged to try to correct the interference by one or more of the following measures:

- Reorient or relocate the receiving antenna.
- Increase the separation between the equipment and receiver.
- Connect the equipment into an outlet on a circuit different from which the receiver is connected.
- Consult the dealer or an experienced radio/TV technician for help.

CAN ICES-3(B)/NMB-3(B)

MADE IN CHINA

Distributed by Jasco Products Company LLC, 10 E. Memorial Rd., Oklahoma City, OK 73114.

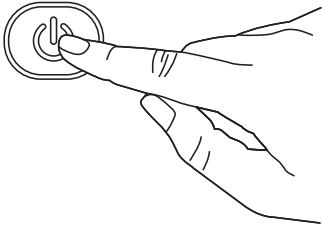
This Jasco product comes with a 5-year limited warranty. Visit www.byjasco.com for warranty details.

Questions? Contact our U.S.-based Consumer Care at 1-800-654-8483 between 7AM – 8PM CST.

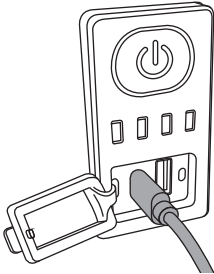


BEFORE
USING, DISABLE
“TRY ME” MODE

Press and hold power
button for 10 seconds.



Plug Micro USB
into lantern.



OR

ITM. / ART. 1327224

Enbrighten® Rechargeable LED Lantern
Instructions

IMPORTANT: RETAIN FOR FUTURE REFERENCE. READ CAREFULLY.

⚠ CAUTION

Batteries may leak harmful liquids or ignitable materials or explode, causing injury or damage.

- Do not mix old and new or other battery types.
- Replace all batteries at the same time.
- Replace fully discharged batteries immediately.
- Remove batteries if product is to be unused for extended period of time.
- Always purchase the correct size and grade of battery most suitable for the intended use.
- Clean the battery contacts and also those of the device prior to battery installation.
- Ensure the batteries are installed correctly with regard to polarity (+ and -).
- Follow all applicable state and federal laws for lithium battery disposal and recycling.

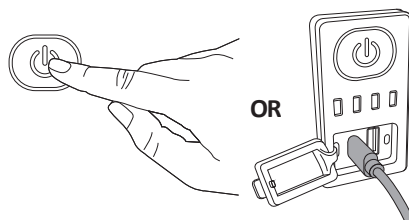
⚠ WARNING

- Avoid placing near a heater or other locations with extreme temperatures.
- DO NOT** continue using or attempt to charge product if it **1)** has been punctured or damaged, **2)** exhibits any abnormal characteristics such as excessive heating or swelling, or **3)** emits an odor.
- Use only in dry locations. **NEVER** immerse in liquids.
- DO NOT** operate near flammable materials, fumes or gases.
- To avoid explosion or exposure to toxic fumes, **DO NOT** dispose of product in a fire.
- Use a mild soap and water should the battery contents come into contact with the skin.
- Rinse eyes with clean running water and seek medical attention should the battery contents come into contact with the eyes.
- Keep away from children. The Rechargeable LED Lantern is not a toy.

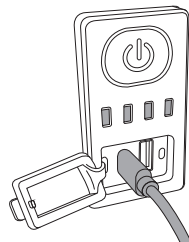


BEFORE USE:

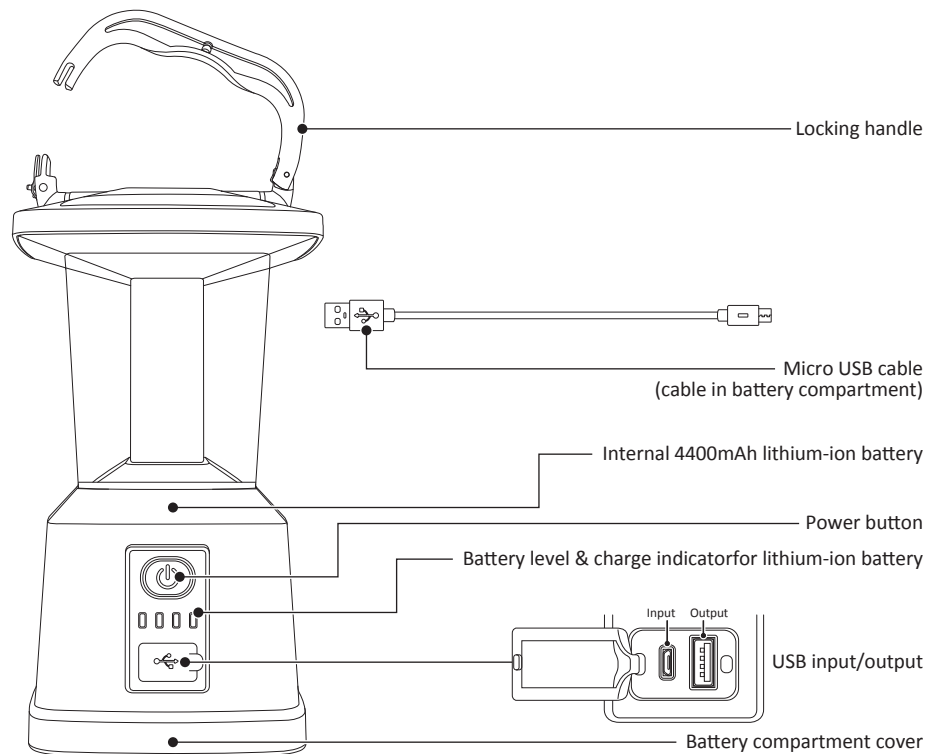
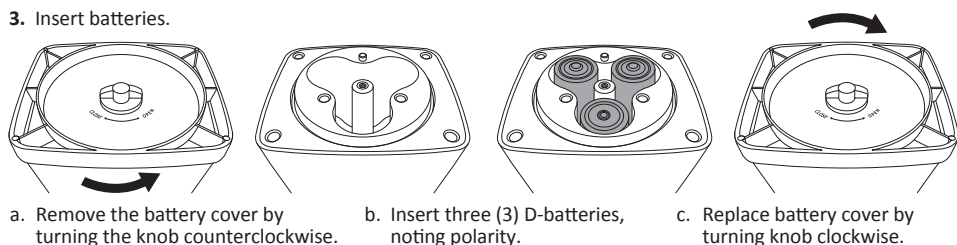
1. Disable "Try Me" mode by pressing and holding the power button for 10 seconds **OR** plugging the micro USB cable into the lantern.



2. Make sure that the internal lithium-ion battery is fully charged.



3. Insert batteries.



OPERATION:

Power Button

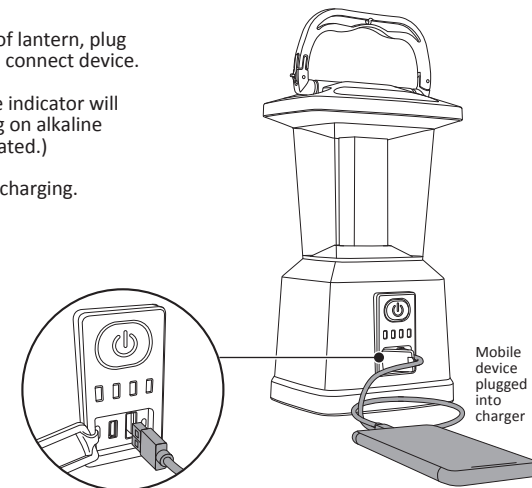
Press and release button to turn lantern ON/OFF. Press and hold button to cycle through the full range of lighting output (60 – 650 Lumens over 10 seconds). Release button at desired level of brightness. When turned OFF and then ON again, the lantern will return to its last brightness level.

Charging and Battery Use

The rechargeable lithium-ion battery functions as the lantern's primary power source. Once the lithium-ion battery is depleted, the lantern will begin using power from the alkaline batteries if installed (not required). In order to conserve battery power, reduce light output or turn off lantern while charging devices.

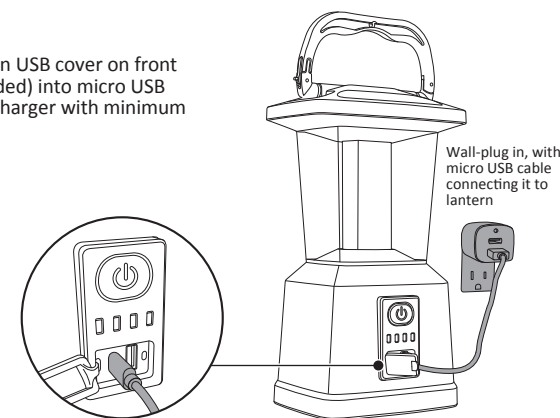
Charge Out

1. To charge devices, open USB cover on front of lantern, plug USB charging cable into USB output port and connect device.
2. If running on internal lithium-ion battery, the indicator will illuminate at current battery level. (If running on alkaline batteries, indicator lights will NOT be illuminated.)
3. Light output may be reduced while device is charging.
4. When the lithium-ion battery reaches 25% or less, the lantern will switch to reduced power mode, during which time it may operate at a reduced lumen output, and USB out may turn off or be disabled.



Charge In

1. To charge internal lithium-ion battery, open USB cover on front of lantern and plug micro USB cable (included) into micro USB input port. Then connect to a USB power charger with minimum 2.4A/12W output (not included).



2. When internal lithium-ion battery is charging, indicator lights will flash from left to right. When fully charged, all four lights will remain on. For best results, fully recharge lantern when battery indicator reaches 25%.



0 - 25%



25 - 50%



50 - 75%



75 - 100%

3. This lantern does not recharge alkaline batteries. The alkaline batteries do not recharge the internal lithium-ion battery.